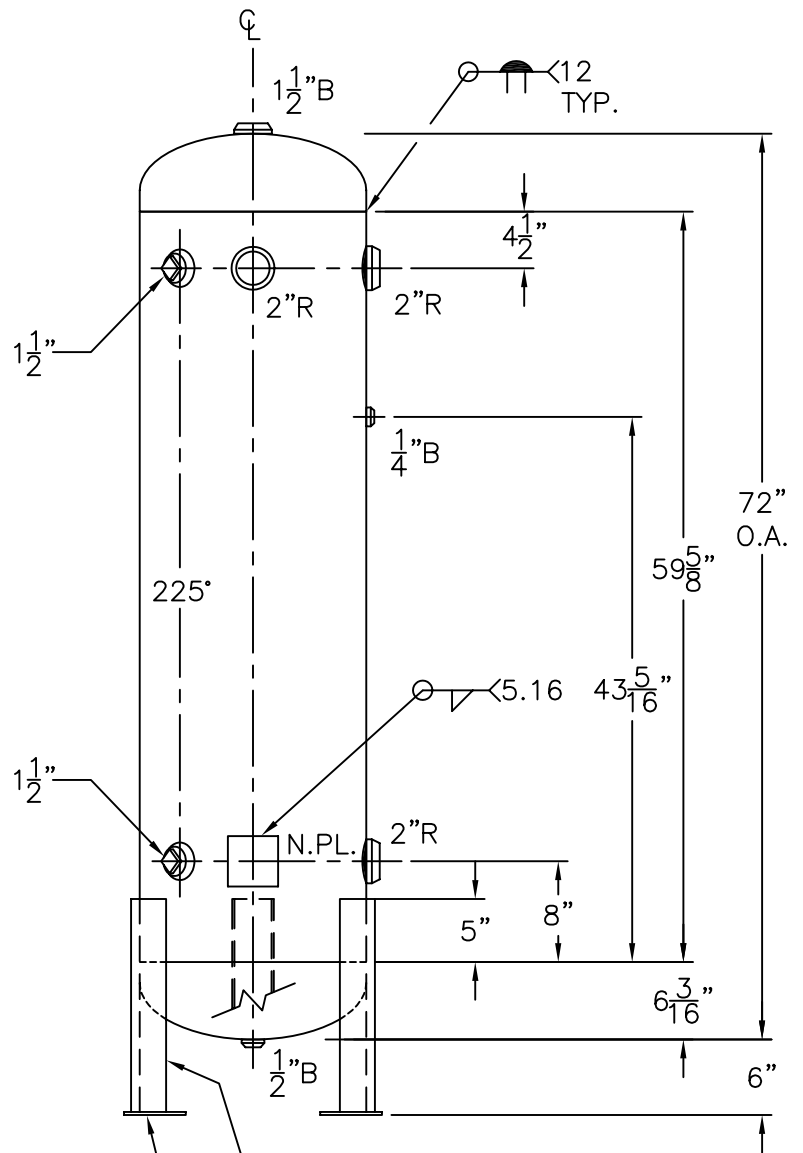
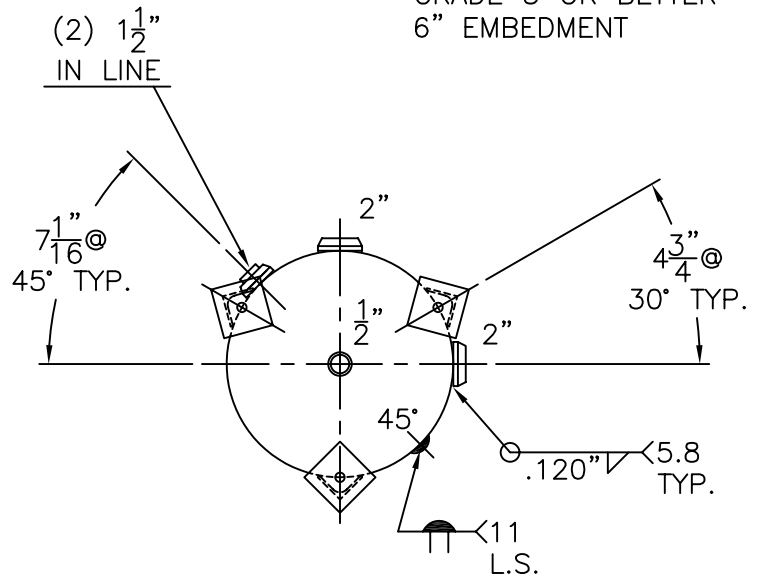


1 1/2" R  
W/ C.I. PLUG  
INSP. OPENING  
(2) PLC'S.



(3) 2 1/2" x 2 1/2" x 3/16" THK.  
x 16 15/16" LG. ANGLE LEGS

(3) 4" x 4" x 1/4" THK.  
PAD W/ 3/4" Ø HOLE  
FOR 1/2" Ø x 8" LG. BOLTS  
GRADE 5 OR BETTER  
6" EMBEDMENT



NOTE: 1) HYDRO @ 390 PSIG. MIN.

SHELL / HEADS	
.182" SA-414-G	2:1 S.E.
JOGGLE - .199	OFFSET
.200" SA-455	
M.A.W.P.	300 PSIG. @ 400 °F
M.D.M.T.	-20 °F @ 300 PSIG.
ASME SECTION VIII	DIV. 1, 2007 ADD 2008
X-RAY:	RT-NO
GALLONS:	73
SERIAL NO.	WT. 277 LBS.
N.B.	

18-VD-73-L	REV. 4-2-09
FOR: HANSON STANDARD	DATE: 12-28-86
VERT. AIR TANK	
INSIDE: UNPAINTED	
OUTSIDE: PRIME	
LEG-ZONE 4-15 KM.	
BY: J.G.	SCALE: 3/4" = 12"
<b>ROY F. HANSON JR. MFG.</b>	
1600 E. WASHINGTON BLVD.	
LOS ANGELES, CA 90021	