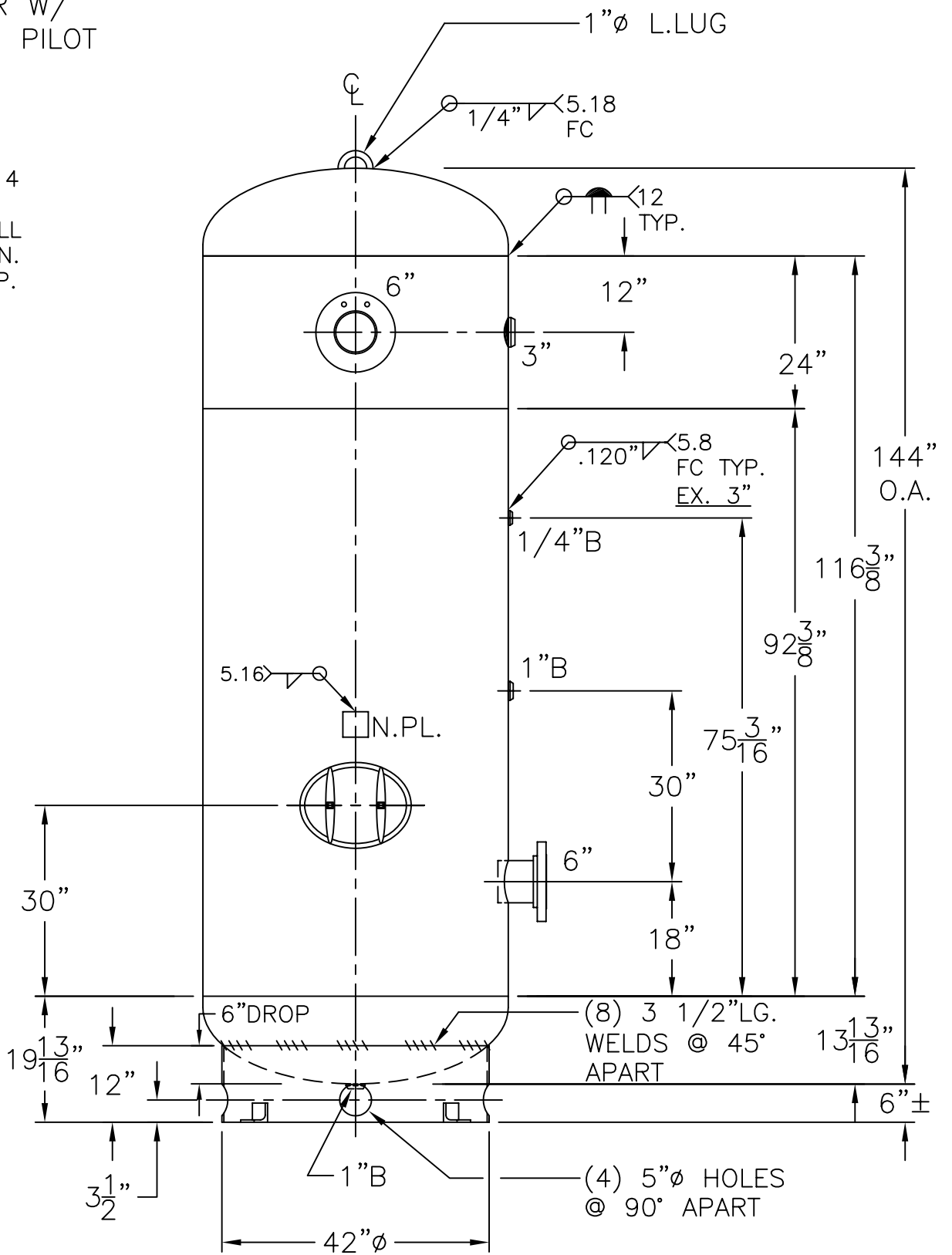


6"-300# R.F.S.O.
 FLG. W/ SCH. 80
 SA-106-B
 PIPE x 7 5/8" LG.
 (2) PLC'S.

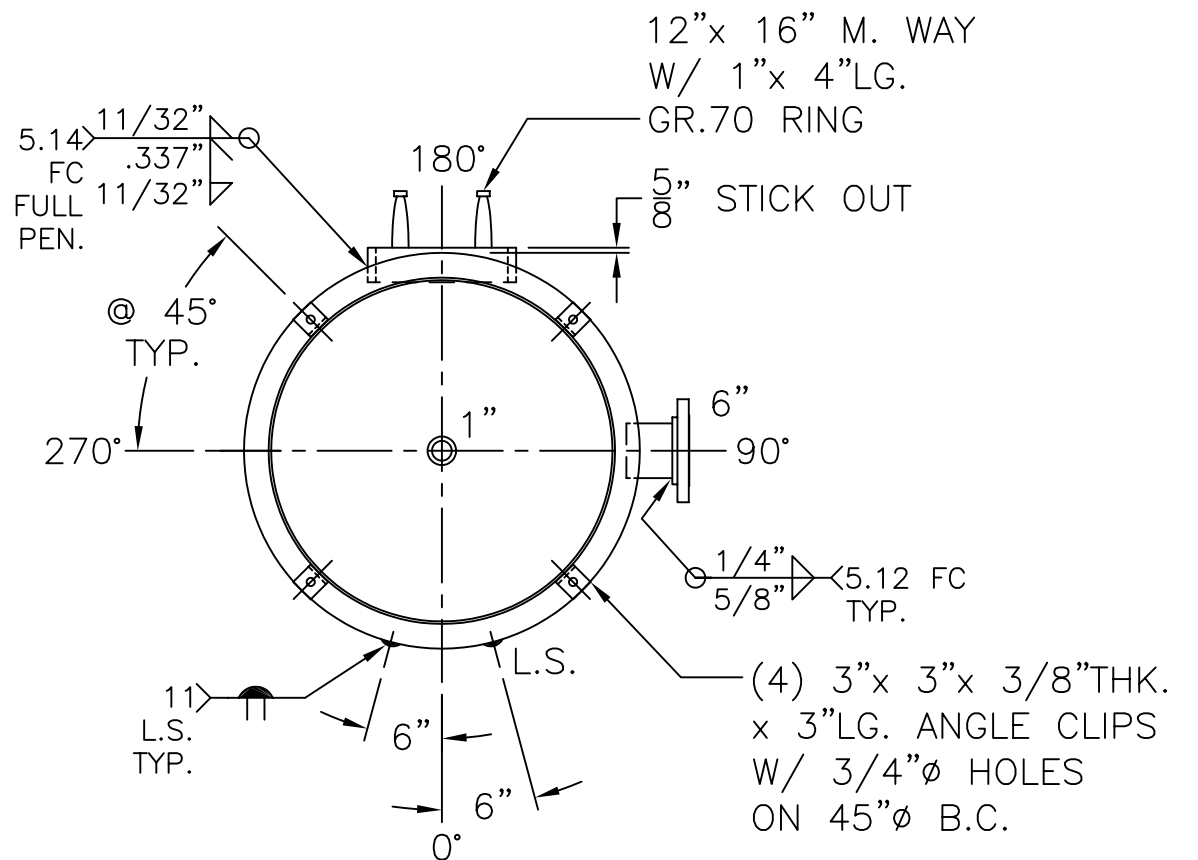


144" O.A.
 116 3/8"
 92 3/8"
 75 3/16"
 30"
 18"
 6"
 13 13/16"
 6" ±
 (8) 3 1/2" LG. WELDS @ 45° APART
 (4) 5" Ø HOLES @ 90° APART
 1" B
 1" B
 1/4" B
 5.8 FC TYP. EX. 3"
 5.16
 N.PL.
 6" DROP
 6"

NOTE: 1) HYDRO @ 325 PSIG. MIN.

SHELL / HEADS	.289" SA-455 2:1 S.E. (.280" MIN.) JOGGLED (.298" OFFSET)
M.A.W.P.	250 PSIG. @ 400 °F
M.D.M.T.	-20 °F @ 250 PSIG.
ASME SECTION VIII	DIV. 1, 2010 ADD 2010
X-RAY: RT-4 SPOT L.S. & HDS. G.S.	
GALLONS: 1060	WT. 2495 LBS.
SERIAL NO.	
N.B.	

48-VC-1060-R	REV. 8-8-11
FOR: HANSON STANDARD	DATE: 6-30-99
VERT. AIR TANK	
UW-21(b)	
INSIDE: UNPAINTED	
OUTSIDE: PRIME	
CAD "B" SIZE UNDER "STD"-SERIES	
BY: J.G.	SCALE: 1/2" = 12"
ROY E. HANSON JR. MFG.	
1600 E. WASHINGTON BLVD.	
LOS ANGELES, CA 90021	



12"x 16" M. WAY
 W/ 1"x 4" LG.
 GR.70 RING
 5" STICK OUT
 5.14 FC FULL PEN. 11/32"
 .337" 11/32"
 @ 45° TYP.
 180°
 270°
 1"
 6"
 6"
 0°
 11 L.S. TYP.
 1/4" 5/8" 5.12 FC TYP.
 (4) 3"x 3"x 3/8" THK. x 3" LG. ANGLE CLIPS W/ 3/4" Ø HOLES ON 45" Ø B.C.