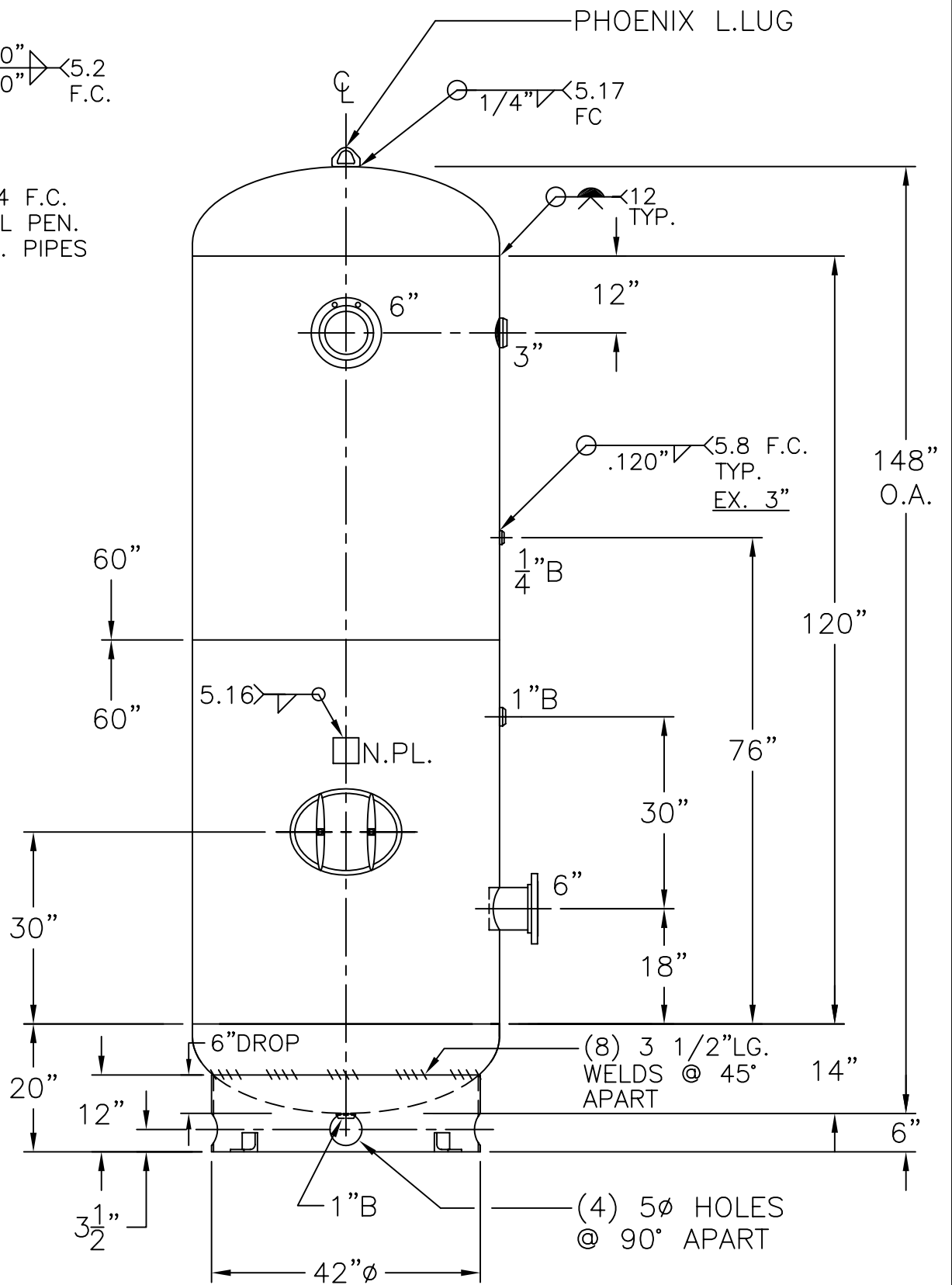


6"-300# R.F.S.O.
 FLG. W/ SCH. 120
 SA-106-B
 PIPE x 7 5/8"LG.
 (2) PLC'S.



NOTE: 1) HYDRO @ 390 PSIG. MIN.

SHELL / HEADS		.358" MIN. SA-516-70 2:1 S.E.	
.338" SA-455			
M.A.W.P.	300 PSIG. @ 400 °F		
M.D.M.T.	-20 °F @ 300 PSIG.		
ASME SECTION VIII	DIV. 1, 2010 ADD 2010		
X-RAY: RT-2	100% L.S. & SPOT ALL G.S.		
GALLONS:	1060	WT.	2823 LBS.
SERIAL NO.			
N.B.			
INSIDE: UNPAINTED		48-VD-1060-R	
OUTSIDE: PRIME		REV. 8-8-11	
CAD-"B" UNDER "STD"-SERIES		DATE: 12-2-98	
BY: J.G.		SCALE: 1/2"=12"	
ROY E. HANSON JR. MFG.		FOR: HANSON STANDARD	
1600 E. WASHINGTON BLVD.		VERT. AIR TANK	
LOS ANGELES, CA 90021		UW-21(b)	

