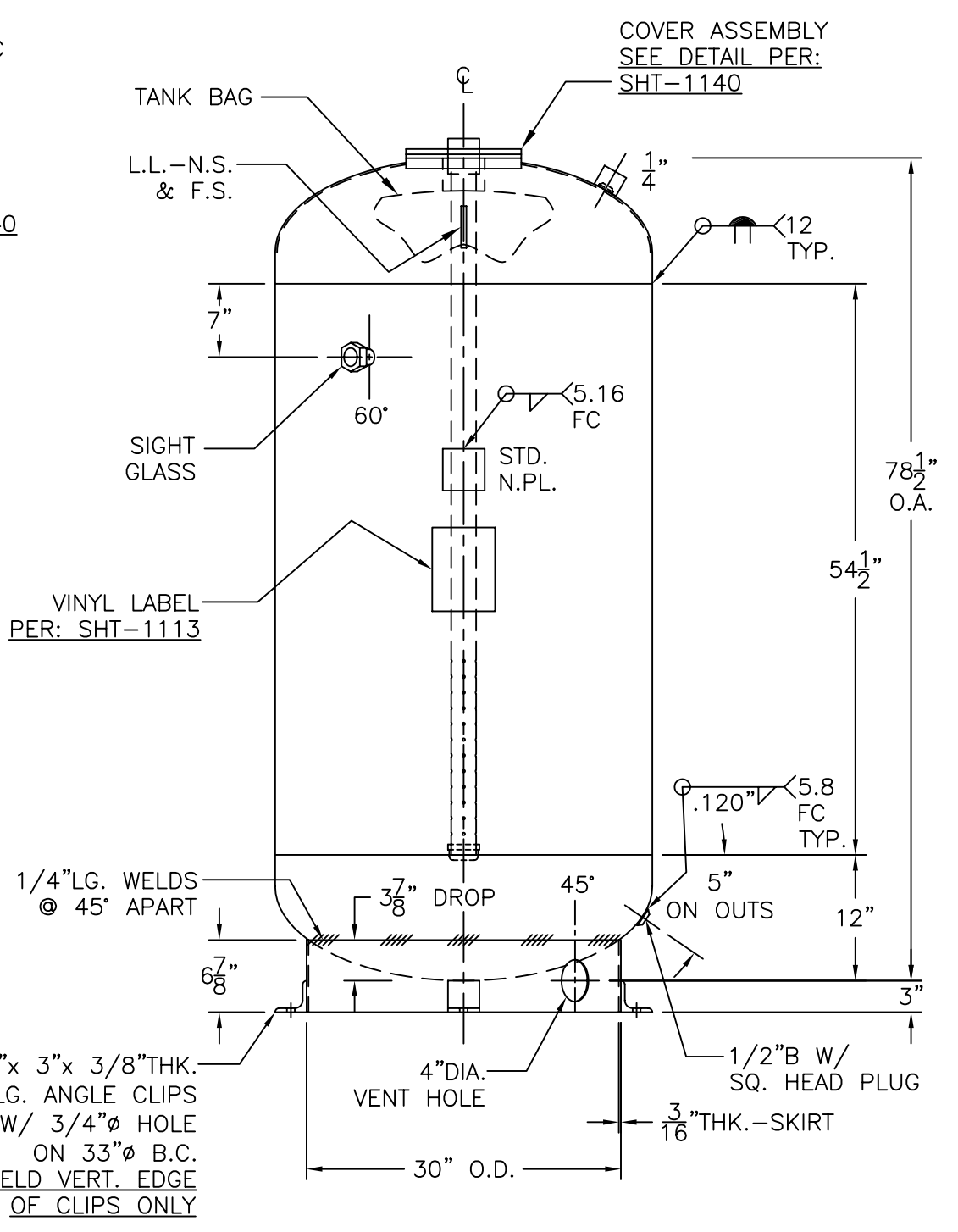


COVER ASSEMBLY DTL.



| SHELL / HEADS | |
|---------------|-----------------------------|
| JOGGLE | .182" SA-455 2:1 S.E. |
| M.A.W.P. | 125 PSIG. @ 240 °F |
| M.D.M.T. | 32 °F @ 125 PSIG. |
| ASME SECTION | VIII DIV. 1, 2004 ADD. 2004 |
| X-RAY: | RT-NO |
| GALLONS: | 317 WT. 637 LBS. |
| SERIAL NO. | |
| N.B. | |

NOTE: 1) HYDRO @ 165 PSIG. MIN.
2) INSPECTION OPENING, UG 46(f)(6).

| TB-317-R | |
|-------------------------------|-----------------|
| REV. | DATE: 4-1-05 |
| HANSON STANDARD | |
| VERT. BLADDER TANK | |
| INSIDE: | UNPAINTED |
| OUTSIDE: | PRIMER |
| BY: E.S. | SCALE: 3/4"=12" |
| ROY E. HANSON JR. MFG. | |
| 1924 COMPTON AVE. | |
| LOS ANGELES, CA 90011 | |